

**CERTIFIED LAND CORNER RECORDATION**

DESCRIPTION OF CORNER EVIDENCE FOUND, AND ORIGINAL RECORD (if known)

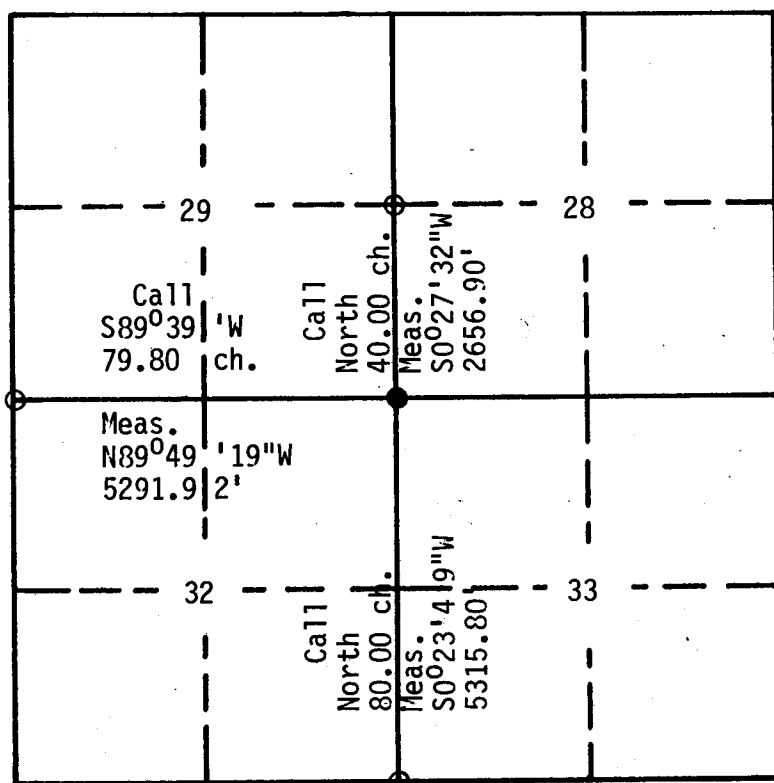
Record: Set a granite boulder, 18"x15"x2", at foot of bluffs for corner to sections 28,29,32 and 33

DESCRIPTION OF MONUMENT AND ACCESSORIES ESTABLISHED TO PERPETUATE THE ORIGINAL LOCATION OF THIS CORNER:

Found: Red granite boulder, 15"x13"x2", lying loose, 1.5' east of north/south fenceline. 4 notches on edge and 1 notch on flat side.

Set: Drove number 5 rebar, 24" long, on east edge of boulder

SKETCH, WITH COURSE AND DISTANCE TO ADJACENT CORNER IF DETERMINED IN THIS SURVEY.  
(May Sketch or Paste Reproduction on Reverse Side.)



Section 32 T: 16N R: 66W

- corner filed--this form
- controlling corner

DETAILS

Basis of bearings taken is from solar observations at Latitude  $41^{\circ}19'31''$ .

Surveyed: 12/1/83  
Job No. 83115.000

I, John L. Dolinar certify that I have carefully performed or reviewed the work done on the diagrammed corner as reported on this recordation form and approve the same.

*John L. Dolinar*  
Signature of Surveyor

2608  
Registration No.

STATE OF WYOMING,  
Office of Clerk and Recorder,  
County of Laramie

**728841**

This "corner record" was filed for record on the 10 day of Jan, 1984, was noted on the cross-index plat and is assigned page No. \_\_\_\_\_, in book No. \_\_\_\_\_.

*Just C Whitehead*  
County Official

Cross Index No. _____	T. _____	R. _____	Mer.
_____	T. _____	R. _____	Mer.
_____	T. _____	R. _____	Mer.
_____	T. _____	R. _____	Mer.
_____	T. _____	R. _____	Mer.
_____	T. _____	R. _____	Mer.
_____	T. _____	R. _____	Mer.

1m